

1550nm 20mW DFB Coaxial Pigtailed Laser Diode with 9um Single Mode Fiber | Built-in PD
1550nm High Power SM Fiber Coupled LD with Single Mode Fiber (SM Fiber)
WSLP-1550-020m-9-DFB
Wavespectrum Laser Group
en.wavespectrum-laser.com.cn

PARAMETER	SYMBOL	VALUE	UNIT
LD Reverse Voltage	V_r	2.0	V
PD Reverse Voltage	$V_{r(PD)}$	15	V
Operating Temperature	T_{op}	-20 ~ +50	°C
Storage Temperature	T_{stg}	-40 ~ +85	°C
Lead soldering temperature (10 sec.)	T_{is}	260	°C

Features:

1550nm
 DFB Laser Diode
 Built-in Photodiodes
 9um SM Fiber
 Isolation Optional
 Coaxial or B86 Package

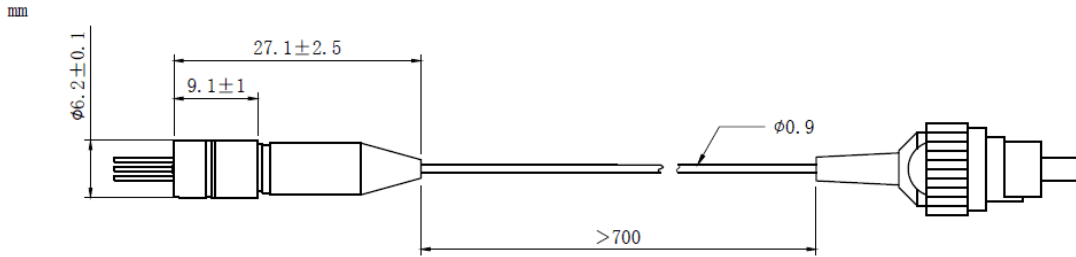
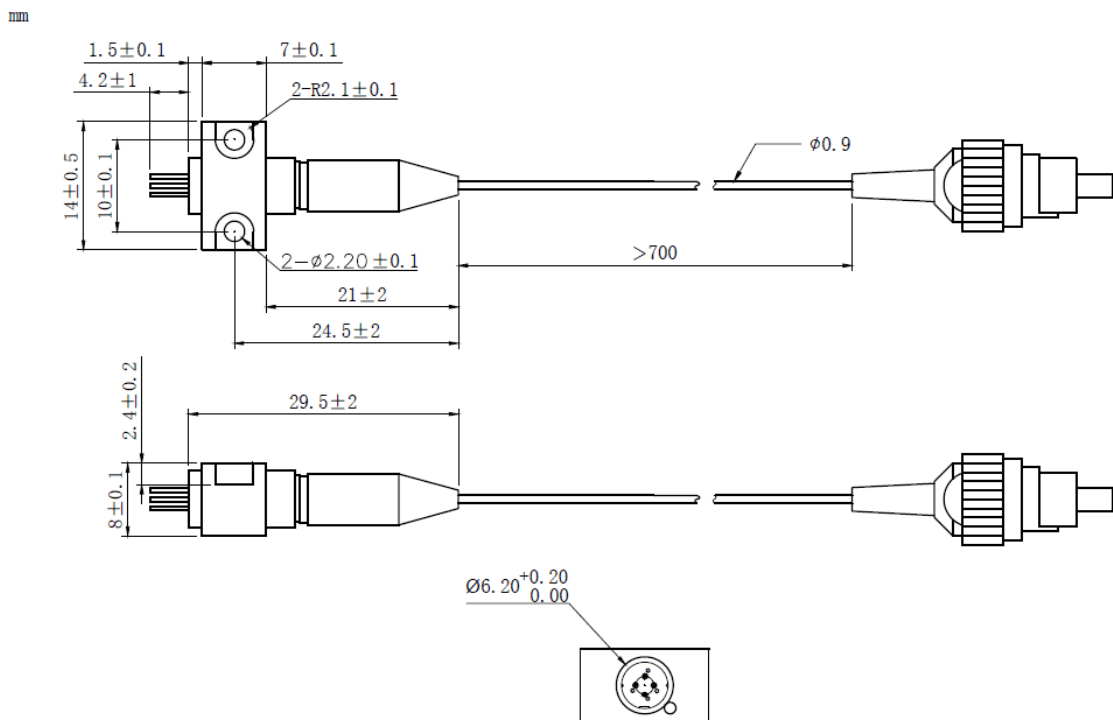
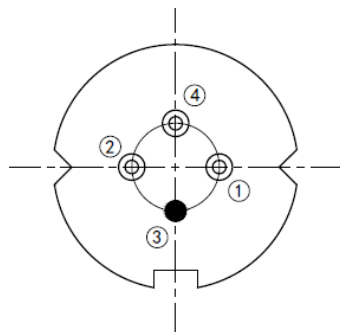
Applications:

Test Equipments
 Optical Transmitter of Analog Signal
 Optical Transmitter of Data Signal


Specifications
WSLP-1550-020m-9-DFB

	Min	Type	Max
Center Wavelength@25°C	1550nm±10nm		
Laser Type	DFB		
Output Power	----	20mW	----
Fiber Core	9um SM Fiber		
Threshold Current (Typ.) I_{th}	----	10mA	30mA
Operating Current	----	160mA	200mA
Operating Voltage	----	1.5V	2.0V
Spectral Width(FWHM)	----	----	2nm
Monitor Current	0.1mA	----	----
Package Style	Coaxial or B86		
Recommended Operation Temperature	25°C		
Connector	FC/SC/SMA905		



Coaxial Package View: (Part Number: WSLP-1550-020m-9-DFB)

B84 Package View: (Part Number: WSLP-1550-020m-9-B-DFB)

Pin Bottom View (A-Type)


PIN 1	PD (+)
PIN 2	LD (-)
PIN 3	LD (+), CASE
PIN 4	PD (-)



Electrically shorten LD module and store in non-extreme conditions.
Suggest using the constant current power supply.

