


**1610nm 2mW~3mW DFB Coaxial Pigtailed Laser Diode with 9um SMF | Built-in Isolator**

**1610nm SM Fiber Coupled LD with Single Mode Fiber (SM Fiber) | Built-in PD**

WSLP-1610-002m-9-DFB

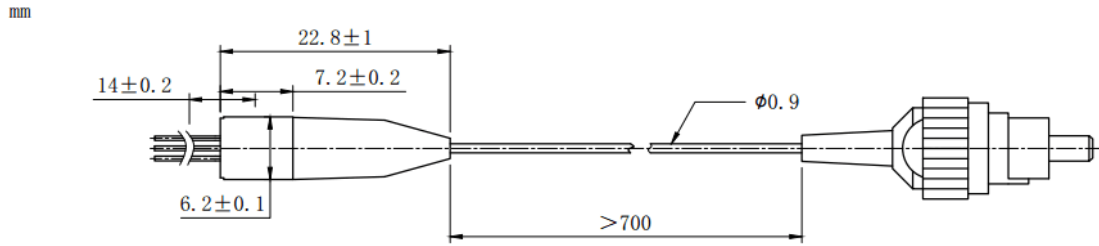
Wavespectrum Laser Group

www.wavespectrum-laser.com

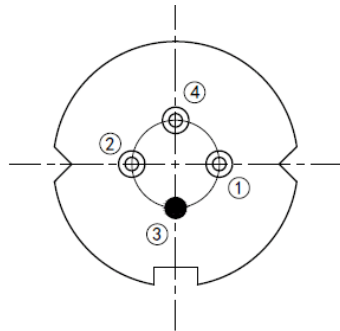
PARAMETER	SYMBOL	VALUE	UNIT	
LD Reverse Voltage	$V_r$	2.0	V	
PD Reverse Voltage	$V_{r(PD)}$	15	V	
Operating Temperature	$T_{op}$	-40~+85	°C	
Storage Temperature	$T_{stg}$	-40~+100	°C	
Lead soldering temperature (10 sec.)	$T_{is}$	260	°C	
<b>Features:</b> <ul style="list-style-type: none"> <li>● 1610nm</li> <li>● DFB Laser Diode</li> <li>● Built-in Photodiodes</li> <li>● 9um SM Fiber</li> <li>● Built-in Isolator</li> <li>● Coaxial/Receptacle Package</li> </ul>				
<b>Applications:</b> <ul style="list-style-type: none"> <li>● Test Equipments</li> <li>● Optical Transmitter of Analog Signal</li> <li>● Optical Transmitter of Data Signal</li> </ul>				
<b>Specifications</b>		<b>WSLP-1610-002m-9-DFB</b>		
		<b>Min</b>	<b>Type</b>	<b>Max</b>
Center Wavelength@25°C		±3nm	1610nm	±10nm
Laser Type		DFB		
Output Power		----	2mW	----
Fiber Core		9um SM Fiber		
Threshold Current (Typ.) $I_{th}$		----	5mA	15mA
Operating Current		----	30mA	35mA
Operating Voltage		----	1.4V	1.7V
Spectral Width (FWHM)		----	0.3nm	1nm
SMSR		----	35dB	----
Monitor Current		0.1mA	----	----
PD Capacitance		----	10pF	20pF
PD Dark Current		----	----	0.1uA
Optical Isolation		----	30dB	----
Package Style		Pigtail (Receptacle Optional)		
Recommended Operation Temperature		25°C		
Connector		FC/SC/SMA905		



**Coaxial Package View:**



**Pin Bottom View (A-Type):**



PIN 1	PD (+)
PIN 2	LD (-)
PIN 3	LD (+), CASE
PIN 4	PD (-)

**Electrically shorten LD module and store in non-extreme conditions.  
Suggest using the constant current power supply.**

