


1530nm 2mW~3mW DFB Coaxial Pigtailed Laser Diode with 9um SMF | Built-in Isolator

1530nm SM Fiber Coupled LD with Single Mode Fiber (SM Fiber) | Built-in PD

WSLP-1530-002m-9-DFB

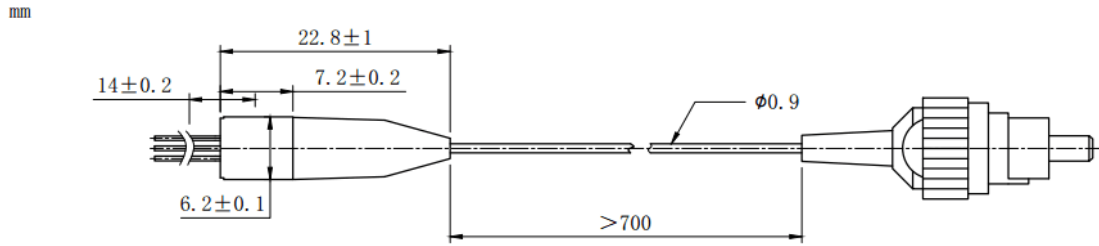
Wavespectrum Laser Group

www.wavespectrum-laser.com

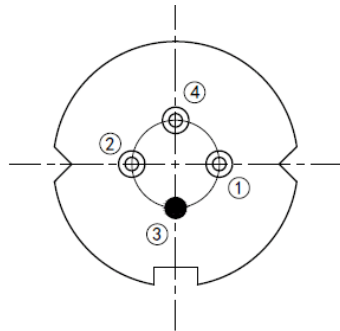
| PARAMETER | SYMBOL | VALUE | UNIT | |
|-----------------------------------------------------------------------------------------------------------------------------------------------------------------------------------------------------------------------------------|-------------|------------------------------------------------------------------------------------|-------------|------------|
| LD Reverse Voltage | V_r | 2.0 | V | |
| PD Reverse Voltage | $V_{r(PD)}$ | 15 | V | |
| Operating Temperature | T_{op} | -40~+85 | °C | |
| Storage Temperature | T_{stg} | -40~+100 | °C | |
| Lead soldering temperature (10 sec.) | T_{is} | 260 | °C | |
| Features: <ul style="list-style-type: none"> ● 1530nm ● DFB Laser Diode ● Built-in Photodiodes ● 9um SM Fiber ● Built-in Isolator ● Coaxial/Receptacle Package | |  | | |
| Applications: <ul style="list-style-type: none"> ● Test Equipments ● Optical Transmitter of Analog Signal ● Optical Transmitter of Data Signal | | | | |
| Specifications | | WSLP-1530-002m-9-DFB | | |
| | | Min | Type | Max |
| Center Wavelength@25°C | | ±3nm | 1530nm | ±10nm |
| Laser Type | | DFB | | |
| Output Power | | ---- | 2mW | ---- |
| Fiber Core | | 9um SM Fiber | | |
| Threshold Current (Typ.) I_{th} | | ---- | 5mA | 15mA |
| Operating Current | | ---- | 30mA | 35mA |
| Operating Voltage | | ---- | 1.4V | 1.7V |
| Spectral Width (FWHM) | | ---- | 0.3nm | 1nm |
| SMSR | | ---- | 35dB | ---- |
| Monitor Current | | 0.1mA | ---- | ---- |
| PD Capacitance | | ---- | 10pF | 20pF |
| PD Dark Current | | ---- | ---- | 0.1uA |
| Optical Isolation | | ---- | 30dB | ---- |
| Package Style | | Pigtail (Receptacle Optional) | | |
| Recommended Operation Temperature | | 25°C | | |
| Connector | | FC/SC/SMA905 | | |



Coaxial Package View:



Pin Bottom View (A-Type):



| | |
|-------|--------------|
| PIN 1 | PD (+) |
| PIN 2 | LD (-) |
| PIN 3 | LD (+), CASE |
| PIN 4 | PD (-) |

**Electrically shorten LD module and store in non-extreme conditions.
Suggest using the constant current power supply.**

