
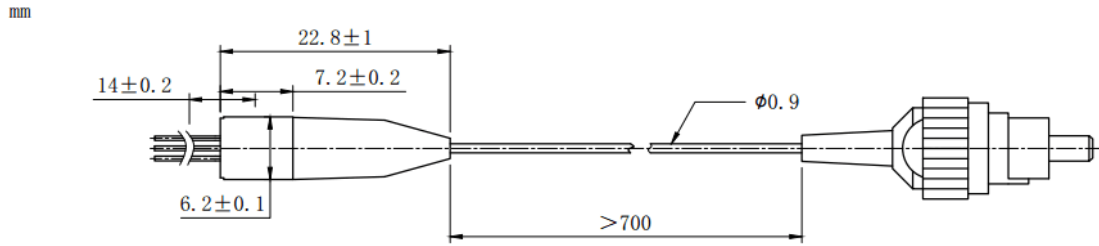


**1510nm 2mW~3mW DFB Coaxial Pigtailed Laser Diode with 9um SMF | Built-in Isolator**
**1510nm SM Fiber Coupled LD with Single Mode Fiber (SM Fiber) | Built-in PD**
**WSLP-1510-002m-9-DFB**
**Wavespectrum Laser Group**
**www.wavespectrum-laser.com**

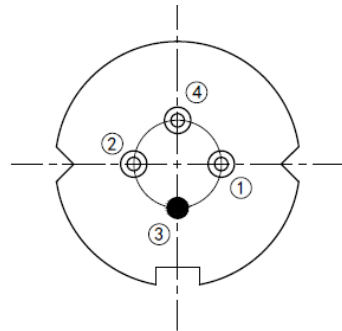
| PARAMETER   | SYMBOL      | VALUE  | UNIT        |            |
|---|-------------|--|-------------|------------|
| LD Reverse Voltage  | $V_r$       | 2.0  | V           |            |
| PD Reverse Voltage  | $V_{r(PD)}$ | 15   | V           |            |
| Operating Temperature   | $T_{op}$    | -40~+85  | °C          |            |
| Storage Temperature   | $T_{stg}$   | -40~+100   | °C          |            |
| Lead soldering temperature (10 sec.)  | $T_{is}$    | 260  | °C          |            |
| <b>Features:</b> <ul style="list-style-type: none"> <li>● 1510nm</li> <li>● DFB Laser Diode</li> <li>● Built-in Photodiodes</li> <li>● 9um SM Fiber</li> <li>● Built-in Isolator</li> <li>● Coaxial/Receptacle Package</li> </ul> |             |  |             |            |
| <b>Applications:</b> <ul style="list-style-type: none"> <li>● Test Equipments</li> <li>● Optical Transmitter of Analog Signal</li> <li>● Optical Transmitter of Data Signal</li> </ul>  |             |  |             |            |
| <b>Specifications</b>   |             | <b>WSLP-1510-002m-9-DFB</b>  |             |            |
|   |             | <b>Min</b>   | <b>Type</b> | <b>Max</b> |
| Center Wavelength@25°C  |             | ±3nm   | 1510nm      | ±10nm      |
| Laser Type  |             | DFB  |             |            |
| Output Power  |             | ----   | 2mW         | ----       |
| Fiber Core  |             | 9um SM Fiber   |             |            |
| Threshold Current (Typ.) $I_{th}$   |             | ----   | 5mA         | 15mA       |
| Operating Current   |             | ----   | 30mA        | 35mA       |
| Operating Voltage   |             | ----   | 1.4V        | 1.7V       |
| Spectral Width (FWHM)   |             | ----   | 0.3nm       | 1nm        |
| SMSR  |             | ----   | 35dB        | ----       |
| Monitor Current   |             | 0.1mA  | ----        | ----       |
| PD Capacitance  |             | ----   | 10pF        | 20pF       |
| PD Dark Current   |             | ----   | ----        | 0.1uA      |
| Optical Isolation   |             | ----   | 30dB        | ----       |
| Package Style   |             | Pigtail (Receptacle Optional)  |             |            |
| Recommended Operation Temperature   |             | 25°C   |             |            |
| Connector   |             | FC/SC/SMA905   |             |            |



**Coaxial Package View:**



**Pin Bottom View (A-Type):**



|       |              |
|-------|--------------|
| PIN 1 | PD (+)       |
| PIN 2 | LD (-)       |
| PIN 3 | LD (+), CASE |
| PIN 4 | PD (-)       |

**Electrically shorten LD module and store in non-extreme conditions.  
Suggest using the constant current power supply.**

