

**1430nm 2mW~3mW DFB Coaxial Pigtailed Laser Diode with 9um SMF | Built-in Isolator**
**1430nm SM Fiber Coupled LD with Single Mode Fiber (SM Fiber) | Built-in PD**
**WSLP-1430-002m-9-DFB-ISO**
**Wavespectrum Laser Group**
**www.wavespectrum-laser.com**

PARAMETER	SYMBOL	VALUE	UNIT
LD Reverse Voltage	$V_r$	2.0	V
PD Reverse Voltage	$V_{r(PD)}$	15	V
Operating Temperature	$T_{op}$	-40~+85	°C
Storage Temperature	$T_{stg}$	-40~+100	°C
Lead soldering temperature (10 sec.)	$T_{is}$	260	°C

**Features:**

- 1430nm
- DFB Laser Diode
- Built-in Photodiodes
- 9um SM Fiber
- Built-in Isolator
- Coaxial/Receptacle Package

**Applications:**

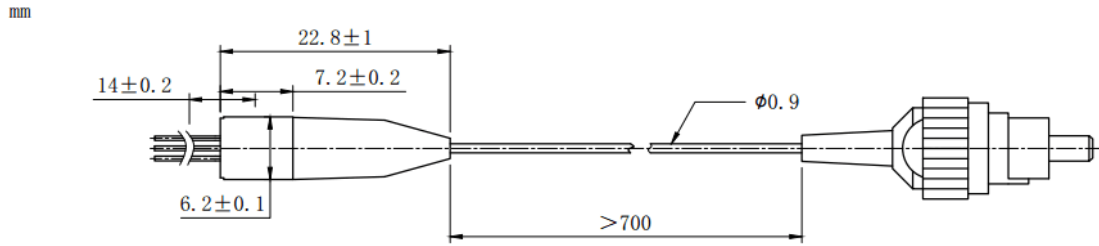
- Test Equipments
- Optical Transmitter of Analog Signal
- Optical Transmitter of Data Signal


**Specifications**
**WSLP-1430-002m-9-DFB-ISO**

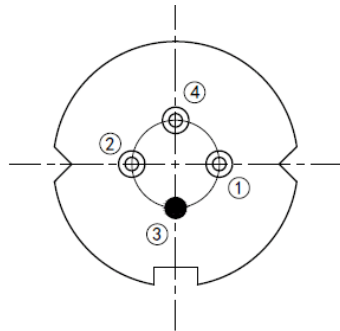
	Min	Type	Max
Center Wavelength@25°C	±3nm	1430nm	±10nm
Laser Type	DFB		
Output Power	----	2mW	----
Fiber Core	9um SM Fiber		
Threshold Current (Typ.) $I_{th}$	----	5mA	15mA
Operating Current	----	30mA	35mA
Operating Voltage	----	1.4V	1.7V
Spectral Width (FWHM)	----	0.3nm	1nm
SMSR	----	35dB	----
Monitor Current	0.1mA	----	----
PD Capacitance	----	10pF	20pF
PD Dark Current	----	----	0.1uA
Optical Isolation	----	30dB	----
Package Style	Pigtail (Receptacle Optional)		
Recommended Operation Temperature	25°C		
Connector	FC/SC/SMA905		



**Coaxial Package View:**



**Pin Bottom View (A-Type):**



PIN 1	PD (+)
PIN 2	LD (-)
PIN 3	LD (+), CASE
PIN 4	PD (-)

Electrically shorten LD module and store in non-extreme conditions.  
 Suggest using the constant current power supply.

