
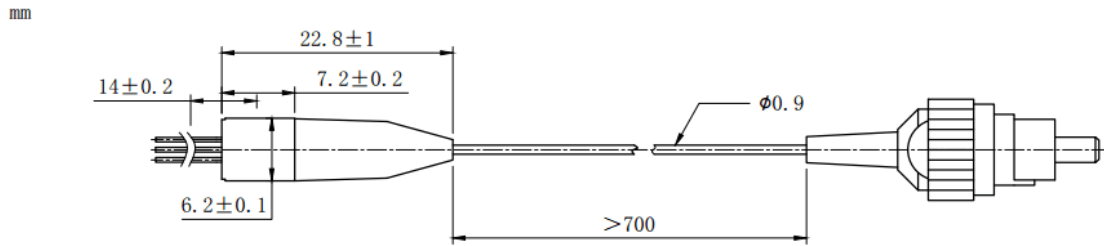
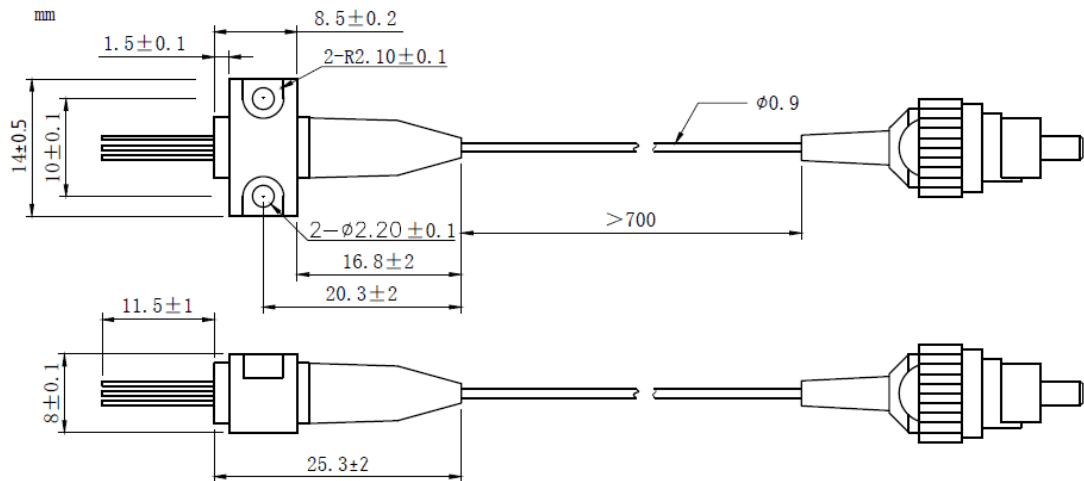
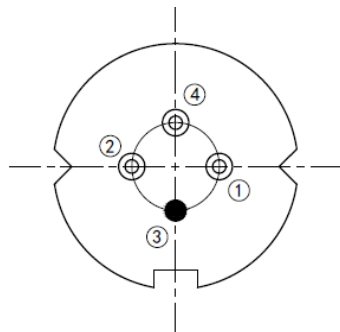


**1310nm 10mW DFB Coaxial Pigtailed Laser Diode with 9um SMF | Built-in Isolator**
**1310nm SM Fiber Coupled LD with Single Mode Fiber (SM Fiber) | Built-in PD**
**WSLP-1310-010m-9-DFB**
**Wavespectrum Laser Group**
**www.wavespectrum-laser.com**

PARAMETER	SYMBOL	VALUE	UNIT	
LD Reverse Voltage	$V_r$	2.0	V	
PD Reverse Voltage	$V_{r(PD)}$	15	V	
Operating Temperature	$T_{op}$	-20 ~ +50	°C	
Storage Temperature	$T_{stg}$	-40 ~ +100	°C	
Lead soldering temperature (10 sec.)	$T_{is}$	260	°C	
<b>Features:</b> <ul style="list-style-type: none"> <li>• 1310nm</li> <li>• DFB Laser Diode</li> <li>• Built-in Photodiodes</li> <li>• 9um SM Fiber</li> <li>• Built-in Isolator</li> <li>• Coaxial or B85 Package</li> </ul>				
<b>Applications:</b> <ul style="list-style-type: none"> <li>• Test Equipments</li> <li>• Optical Transmitter of Analog Signal</li> <li>• Optical Transmitter of Data Signal</li> </ul>				
<b>Specifications</b>		<b>WSLP-1310-010m-9-DFB</b>		
		Min	Type	Max
Center Wavelength@25°C		±3nm	1310nm	±10nm
Laser Type		DFB		
Output Power		----	10mW	----
Fiber Core		9um SM Fiber		
Threshold Current (Typ.) $I_{th}$		----	5mA	15mA
Operating Current		----	90mA	100mA
Operating Voltage		----	1.4V	1.7V
Spectral Width (FWHM)		----	0.3nm	1nm
SMSR		----	35dB	----
Monitor Current		0.1mA	----	----
PD Capacitance		----	10pF	20pF
PD Dark Current		----	----	0.1uA
Optical Isolation		----	30dB	----
Package Style		Coaxial or B85		
Recommended Operation Temperature		25°C		
Connector		FC/SC/SMA905		



**Coaxial Package View: (Part Number: WSLP-1310-010m-9-DFB)**

**B85 Package View: (Part Number: WSLP-1310-010m-9-B-DFB)**

**Bottom View: (A-Type)**


PIN 1	PD(+)
PIN 2	LD(-)
PIN 3	LD(+), CASE
PIN 4	PD(-)



Electrically shorten LD module and store in non-extreme conditions.  
Suggest using the constant current power supply.

