

1310nm 10mW Pigtailed Laser Module with Polarization maintaining Fiber (PM Fiber)

1310nm PM Fiber Coupled LD Module with Coaxial Package (9um Single Mode PM Fiber)

WSLP-1310-010m-PM-DFB

Wavespectrum Laser Group

www.wavespectrum-laser.com

PARAMETER	SYMBOL	VALUE	UNIT
LD Reverse Voltage	V_r	2.0	V
PD Reverse Voltage	$V_{r(PD)}$	15	V
Operating Temperature	T_{op}	-20 ~ +50	°C
Storage Temperature	T_{stg}	-40 ~ +100	°C
Lead soldering temperature (10 sec.)	T_{is}	260	°C

Features:

- 1310nm
- DFB Laser Diode
- Built-in Photodiodes
- Built-in Isolator
- High Reliability
- High Polarization Extinction Ratio

Applications:

- Test Equipments
- Optical Transmitter of Analog Signal
- Optical Transmitter of Data Signal



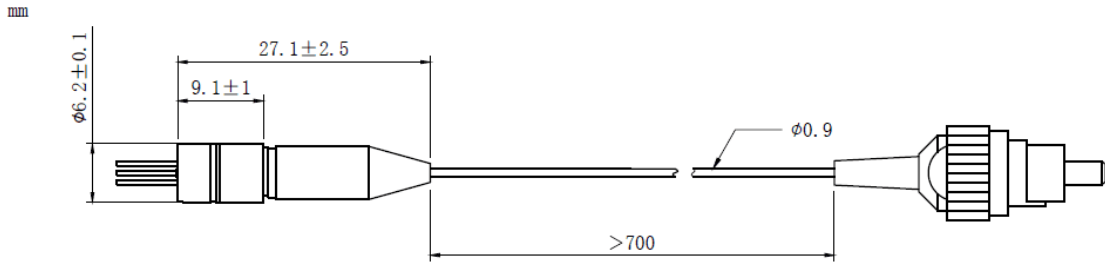
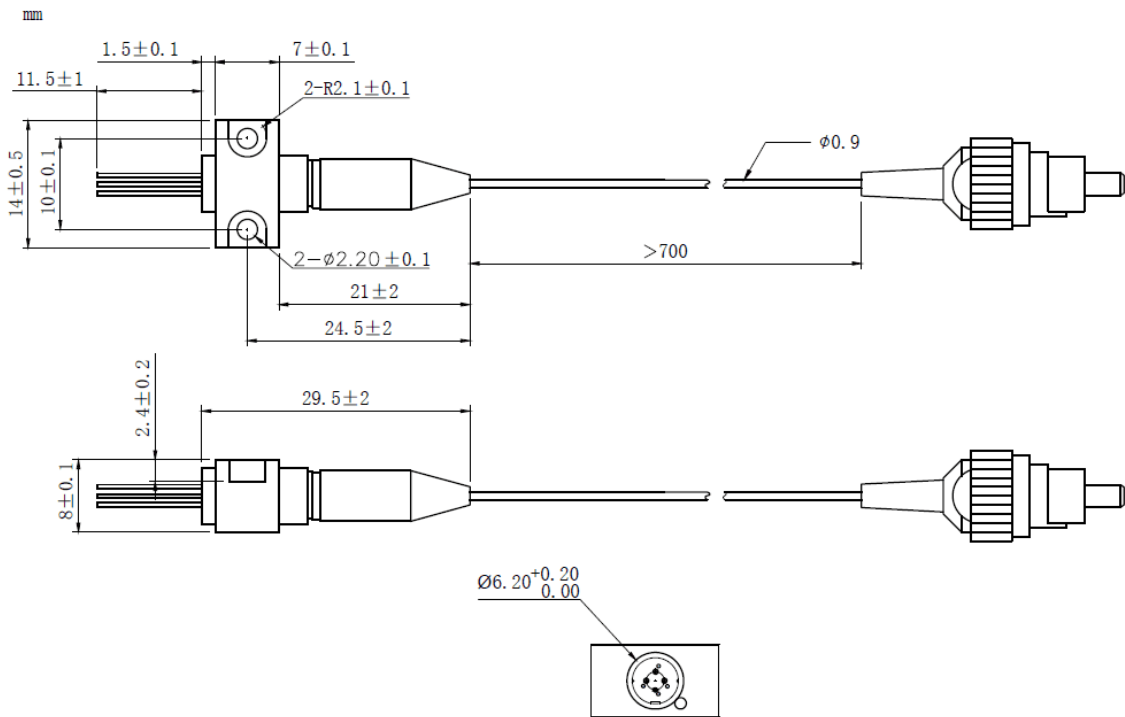
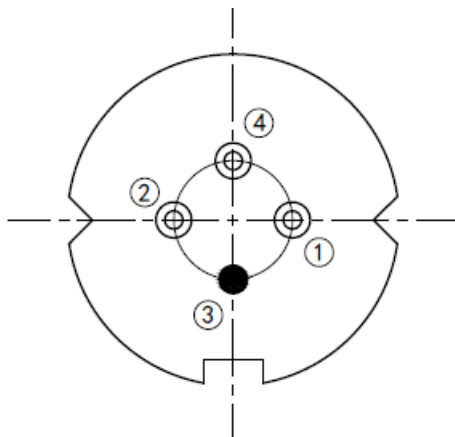
Specifications

WSLP-1310-010m-PM-DFB

	Min	Type	Max
Center Wavelength@25°C	±3nm	1310nm	±10nm
Spectral Width(FWHM)	----	0.3nm	1nm
Output Power	----	10mW	----
Fiber Type	Polarization Maintaining Fiber		
Fiber Core	9um		
Recommended Operation Temperature	25°C		
Polarization Extinction Ratio	13dB	15dB	----
Connector	FC/APC		
Threshold Current (Typ.) I_{th}	----	5mA	15mA
Operating Current	----	90mA	100mA
Operating Voltage	----	1.4V	1.7V
Optical Isolation	30dB		
Fiber Length	>80cm		
Package Style	Coaxial or B86		

High Polarization Extinction Ratio (PER) Version Laser Module is also available, please contact us.



Coaxial Package View: (Part Number: WSLP-1310-010m-PM-DFB)

B86 Package View: (Part Number: WSLP-1310-010m-PM-B-DFB)

Bottom View: (A-Type)


PIN 1	PD (+)
PIN 2	LD (-)
PIN 3	LD (+), CASE
PIN 4	PD (-)



Electrically shorten LD module and store in non-extreme conditions.
Suggest using the constant current power supply.

