


**510nm~520nm 200mW Coaxial Pigtailed Diode Laser with MMF | Green LD Module**
**520nm 200mW Fiber Coupled Laser Diode with 50um 60um 105um Multi-mode Fiber**

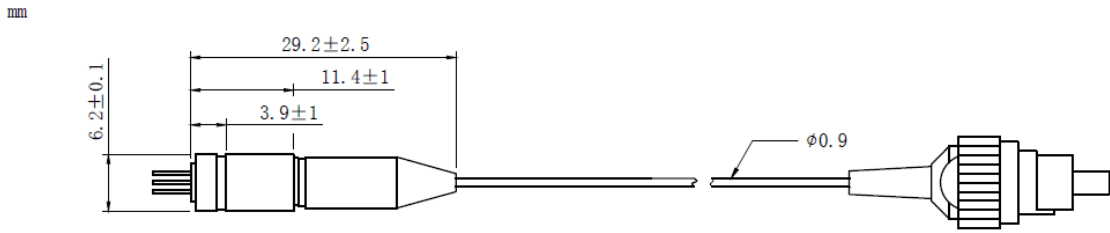
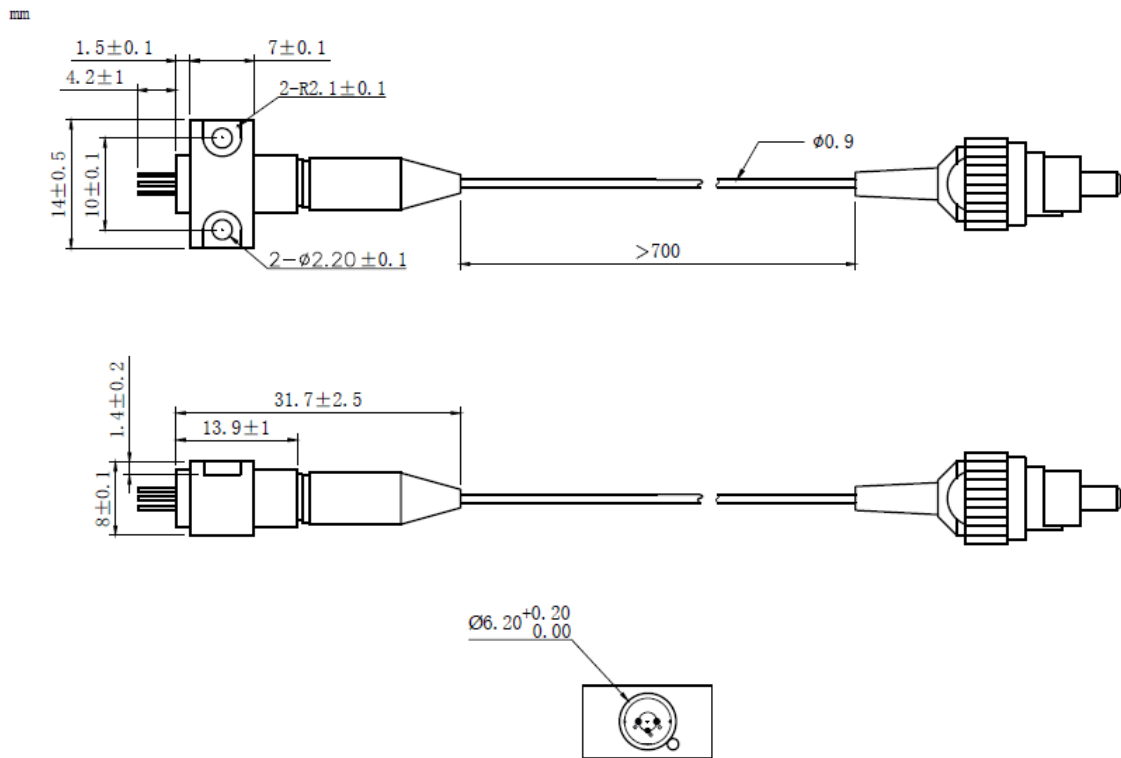
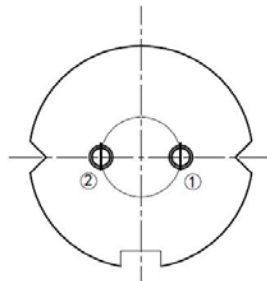
WSLP-520-200m-M

Wavespectrum Laser Group

[www.wavespectrum-laser.com](http://www.wavespectrum-laser.com)

520nm Pigtailed Diode Laser		200mW/MM Fiber		Wavespectrum Laser Group	
PARAMETER	SYMBOL	VALUE		UNIT	
Reverse Voltage	$V_r$	2.0		V	
Operating Temperature	$T_{op}$	-10~+60		°C	
Storage Temperature	$T_{stg}$	-40~+85		°C	
Lead soldering temperature (10 sec.)	$T_{is}$	260		°C	
<b>Features:</b> <ul style="list-style-type: none"> <li>🔸 520nm</li> <li>🔸 Multi-mode Fiber</li> <li>🔸 Coaxial or B82 Package</li> <li>🔸 Photodiode Optional</li> </ul>					
<b>Applications:</b> <ul style="list-style-type: none"> <li>🔸 Medical Laser Treatment</li> <li>🔸 Others</li> </ul>					
<b>Specifications</b>	<b>WSLP-520-200m-M</b>				
	Min	Type	Max		
Center Wavelength@25°C	510nm	520nm	530nm		
Spectral Width (FWHM)	----	2.0nm	----		
Output Power	----	200mW	----		
Fiber Core	105um ( 50um, 62.5um Optional)				
Recommend Operating Temperature	25°C				
Monitor Current	----	----	----		
PD Reverse Voltage	----	----	----		
Fiber Connector	FC/SC/SMA905				
Fiber Length	>80cm				
Threshold Current (Typ.)	----	100mA	400mA		
Operating Current (Typ.)	----	600mA	700mA		
Operating Voltage	----	5.5V	6.5V		
Package Style	Coaxial or B82				



**Coaxial Package View: (Part Number: WSLP-520-200m-M)**

**B82 Package View: (Part Number: WSLP-520-200m-M-B)**

**PIN Bottom View:**


1	LD(+)
2	LD(-)



Electrically shorten LD module and store in non-extreme conditions.  
Suggest using the constant current power supply.

