


**635nm~638nm 100mW SM Fiber Coupled Laser Diode with SMF-28 Fiber**
**635nm Coaxial Pigtailed LD with 9um Fiber (SM Fiber)**

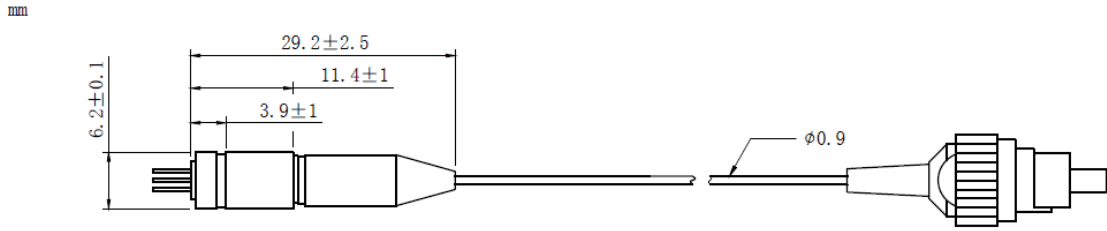
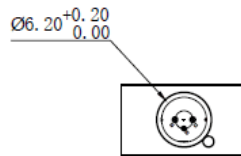
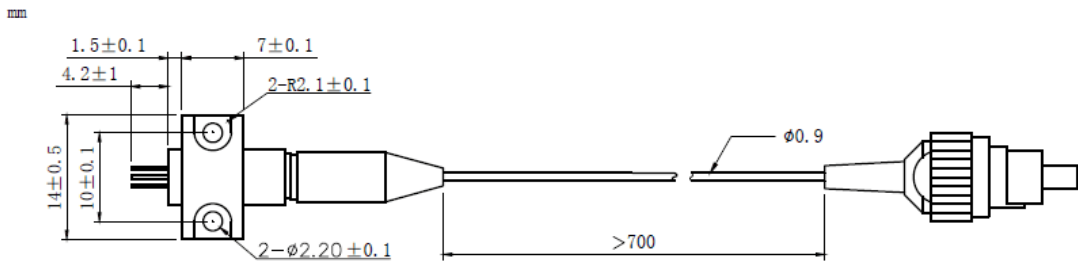
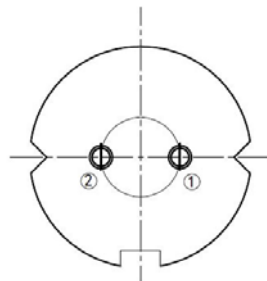
WSLP-635-100m-9

Wavespectrum Laser Group

[www.wavespectrum-laser.com](http://www.wavespectrum-laser.com)
[en.wavespectrum-laser.com.cn](http://en.wavespectrum-laser.com.cn)

635nm Pigtailed Diode Laser		100mW/9um Fiber	
PARAMETER	SYMBOL	VALUE	UNIT
Reverse Voltage	$V_r$	2.0	V
Operating Temperature	$T_{op}$	-10~+60	°C
Storage Temperature	$T_{stg}$	-40~+85	°C
Lead soldering temperature (10 sec.)	$T_{is}$	260	°C
<b>Features:</b> <ul style="list-style-type: none"> <li>● 635nm</li> <li>● 9um Fiber</li> <li>● Coaxial or B82 Package</li> </ul>			
<b>Applications:</b> <ul style="list-style-type: none"> <li>● Medical Laser Treatment</li> <li>● Aiming Beam</li> <li>● Others</li> </ul>			
<b>Specifications</b>	<b>WSLP-635-100m-9</b>		
	Min	Type	Max
Center Wavelength@25°C	630nm	638nm	645nm
Recommended work Temperature	25°C		
Output Power	----	100mW	----
Fiber Type	SMF-28		
Fiber Core	9um		
Monitor Current	----	----	----
PD Reverse Voltage	----	----	----
Fiber Connector	FC/SC/SMA905		
Fiber Length	----	80cm	100cm
Threshold Current (Typ.)	----	70mA	95mA
Operating Current (Typ.)	----	230mA	250mA
Operating Voltage	----	2.8V	3.5V
Package Style	Coaxial or B82		



**Coaxial Package View: (Part Number: WSLP-635-100m-9)**

**B82 Package View: (Part Number: WSLP-635-100m-9-B)**

**PIN Bottom View:**


1	LD(+)
2	LD(-)



Electrically shorten LD module and store in non-extreme conditions.  
Suggest using the constant current power supply.

