


635nm~638nm 80mW~90mW SM Fiber Coupled Laser Diode with SMF-28 Fiber
635nm Coaxial Pigtailed LD with 9um Fiber (SM Fiber)

WSLP-635-080m-9

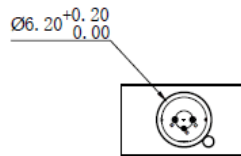
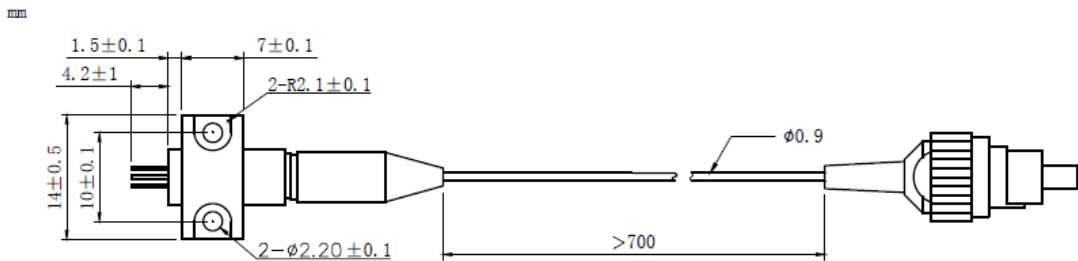
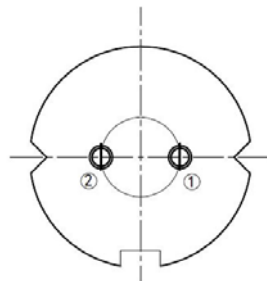
Wavespectrum Laser Group

www.wavespectrum-laser.com

635nm Pigtailed Diode Laser		80mW/9um Fiber		en.wavespectrum-laser.com.cn	
PARAMETER	SYMBOL	VALUE		UNIT	
Reverse Voltage	V_r	2.0		V	
Operating Temperature	T_{op}	-10~+60		°C	
Storage Temperature	T_{stg}	-40~+85		°C	
Lead soldering temperature (10 sec.)	T_{is}	260		°C	
Features: <ul style="list-style-type: none"> ● 635nm ● 9um Fiber ● Coaxial or B82 Package 					
Applications: <ul style="list-style-type: none"> ● Medical Laser Treatment ● Aiming Beam ● Others 					
Specifications	WSLP-635-080m-9				
	Min	Type	Max		
Center Wavelength@25°C	630nm	638nm	645nm		
Recommended work Temperature	25°C				
Output Power	----	80mW	----		
Fiber Type	SMF-28				
Fiber Core	9um				
Monitor Current	----	----	----		
PD Reverse Voltage	----	----	----		
Fiber Connector	FC/SC/SMA905				
Fiber Length	----	80cm	100cm		
Threshold Current (Typ.)	----	65mA	95mA		
Operating Current (Typ.)	----	220mA	240mA		
Operating Voltage	----	2.8V	3.5V		
Package Style	Coaxial or B82				



Coaxial Package View: (Part Number: WSLP-635-080m-9)

B82 Package View: (Part Number: WSLP-635-080m-9-B)

PIN Bottom View:


1	LD(+)
2	LD(-)



Electrically shorten LD module and store in non-extreme conditions.
Suggest using the constant current power supply.

