

**635nm&532nm&445nm Tri-Wavelength Fiber Coupled Laser Diode Module| RGB | Red Green Blue  
350mW@635nm&300mW@532nm&1W@450nm | <400um Fiber Core | With PD| TEC Cooling**

Wavespectrum Laser Group [www.wavespectrum-laser.com](http://www.wavespectrum-laser.com)

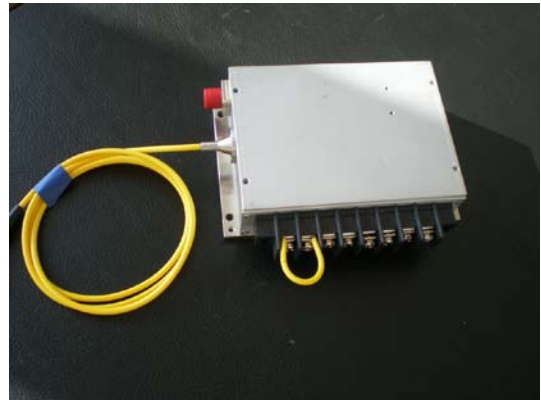
PARAMETER	SYMBOL	VALUE	UNIT
Reverse Voltage	$V_r$	2.0	V
Operating Temperature	$T_{op}$	+10 ~ +30	°C
Storage Temperature	$T_{stg}$	-20 ~ +80	°C
Lead soldering temperature (10 sec.)	$T_{is}$	260	°C

**Features:**

- 635nm&532nm&445nm Tri-wavelength Output
- TEC Cooling Optional
- Built-in Photodiodes Optional
- Customized Wavelength and Power Optional

**Applications:**

- Medical laser treatment
- Laser Show
- Others



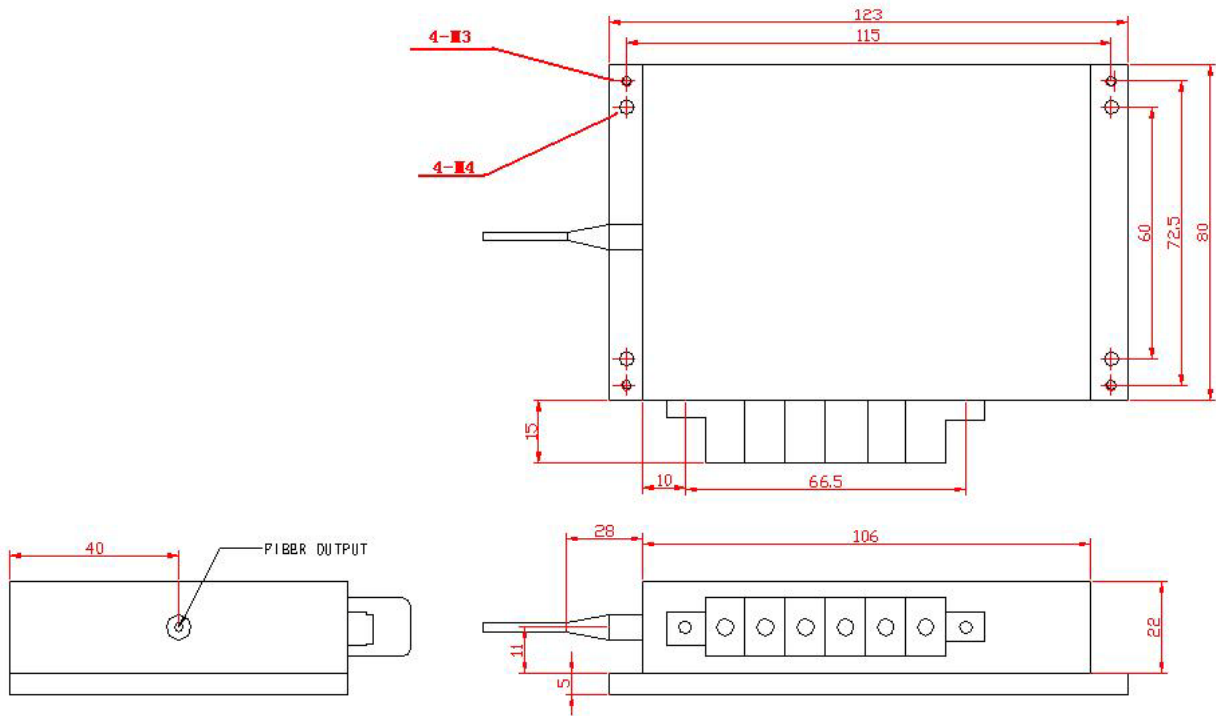
**Specifications**

**WSLB-635/350m-532/300m-445/001-H**

	Wavelength-1	Wavelength-2	Wavelength-3
Center Wavelength	635nm	532nm	445nm
Output Power (CW)	350mW	300mW	1W
Threshold Current (Typ.)	0.75A	0.35A	0.3A
Operating Current (Typ.)	1.3A	1.8A	1.3A
Operating Voltage	2.2V	2.0V	5.0V
Recommended Operating Temperature	18°C		
TEC Cooling	Optional		
Thermistor (10K)	Optional		
Photodiodes	Optional		
Fiber Core Diameter	<400um		
Stainless Steel Armored Fiber Jacket	Optional		
Fiber Length	100cm		
Connector Type	FC/SMA905		
Package	P2		



Package View



PIN	1	2	3	4	5	6
	LD1 (+)	LD1 (-)	LD2 (+)	LD2 (-)	LD3 (+)	LD3 (-)

Wavespectrum offer Customized 635nm & 532nm & 445nm Tri-Wavelength Module.

- Customized Output Power (Such as 700W@635nm & 500mW@532nm & 2W@445nm)
- Built-in Photodiodes and TEC Cooler Optional
- Fiber Detachable Package Optional

Contact us with [info@wavespectrum-laser.com](mailto:info@wavespectrum-laser.com)

**Caution**  
 On operation, if optical connectors are unterminated, modules can emit invisible laser radiation. Radiation emitted by laser devices can be dangerous to the eyes. Avoided eye or skin exposure to direct or scattered radiation



Wavespectrum Laser, Inc.  
 www.wavespectrum-laser.com  
 wavespectrumlaser@gmail.com

