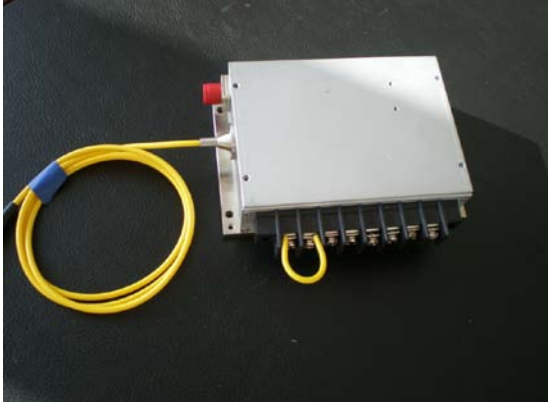


830nm & 650nm (or 635nm) Dual-Wavelength Fiber Coupled Laser Diode Module | Red or Blue Aiming Beam
12W@830 & 2mW@650nm LD | With PD | With TEC Cooling | HHL Package | <400um Fiber Core
Wavespectrum Laser Group www.wavespectrum-laser.com

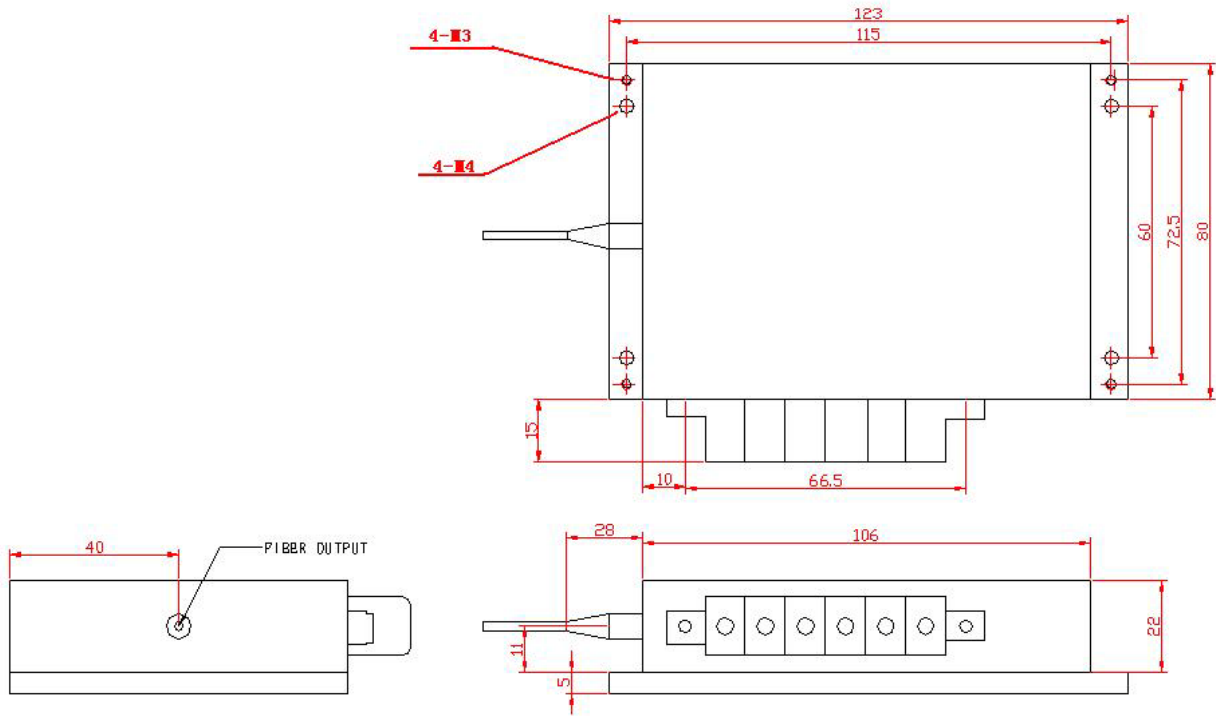
PARAMETER	SYMBOL	VALUE	UNIT
Reverse Voltage	V_r	2.0	V
Operating Temperature	T_{op}	+10 ~ +30	°C
Storage Temperature	T_{stg}	-20 ~ +80	°C
Lead soldering temperature (10 sec.)	T_{is}	260	°C

Features: <ul style="list-style-type: none"> • 830nm & 650nm Dual-Wavelength Output • TEC Cooling Optional • PD Optional • Blue Aiming Beam Optional • Customized Output Power 	
Applications: <ul style="list-style-type: none"> • Medical laser treatment • Others 	

Specifications	WSLB-830-012-H-A
	Type Value
Center Wavelength@25°C	830nm
Recommended Operating Temperature	25°C
Output Power (CW)	12W
Aiming Beam	2mw@650nm
	635nm/405nm/445nm As Aiming Beam Optional
Threshold Current (Typ.)	0.8A
Operating Current (Typ.)	3.4A
Operating Voltage	12V
TEC Cooling	Optional
Thermistor (10K)	Optional
Fiber Core Diameter	<400um
Built-in Photodiodes	Optional
Stainless Steel Armored Fiber Jacket	Optional
Fiber Length	100cm
Connector Type	FC or SMA905
Package	P2



Package View



PIN	1	2	3	4	5	6
	LD (+)	LD (-)	Red (+)	Red (-)	NC	NC

Wavespectrum offer Customized 830nm & 650nm Dual-Wavelength Laser Module.

- Customized Output Power (Such as 10W@830nm & 2w@650nm)
- Blue Aiming Beam (405nm or 445nm) Optional
- Built-in Photodiodes and TEC Cooler Optional
- High Power Red Laser Optional (Such as 12W@830nm & 300mW@635nm)
- Tri-Wavelength Solution Optional (Such as 4W@830nm & 4W@808nm & 2mw@650nm)

Contact us with info@wavespectrum-laser.com

Caution
 On operation, if optical connectors are unterminated, modules can emit invisible laser radiation. Radiation emitted by laser devices can be dangerous to the eyes. Avoided eye or skin exposure to direct or scattered radiation



Wavespectrum Laser, Inc.
 www.wavespectrum-laser.com
 wavespectrumlaser@gmail.com

